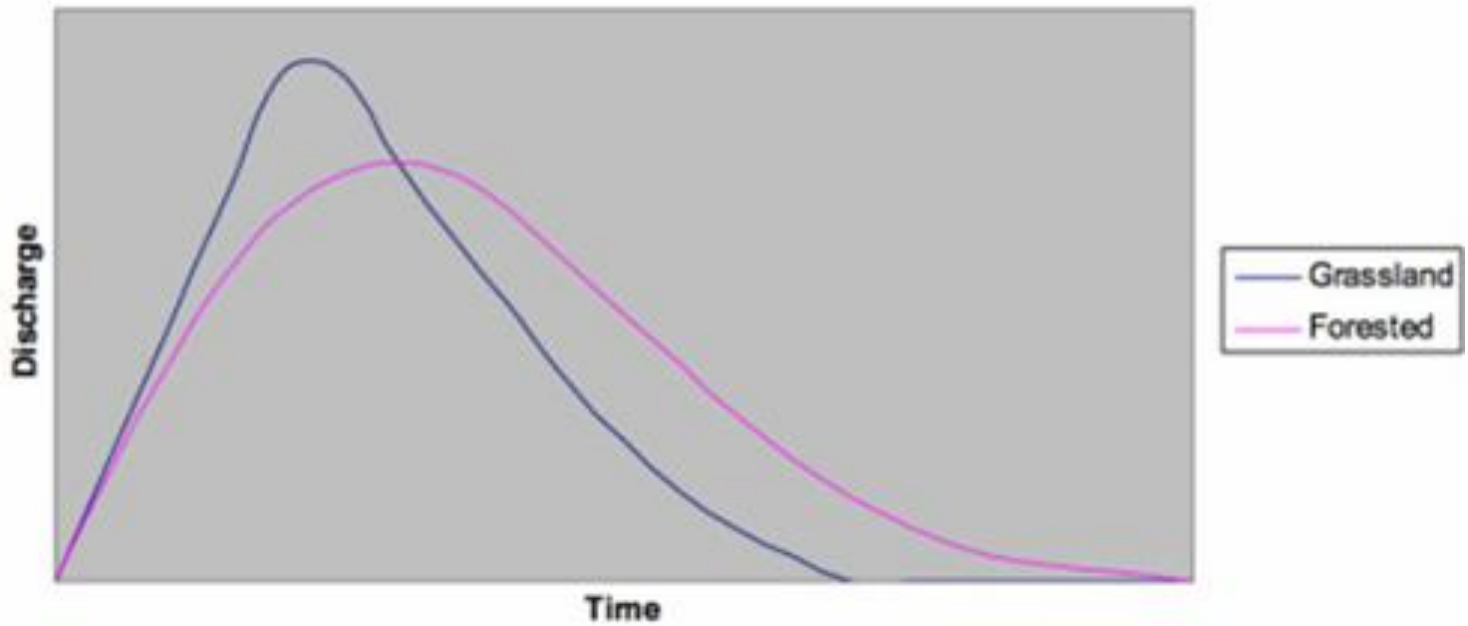


# ARC's and NFM's!





## Theoretical Discharge Hydrograph





# Natural Flood Management With Trees

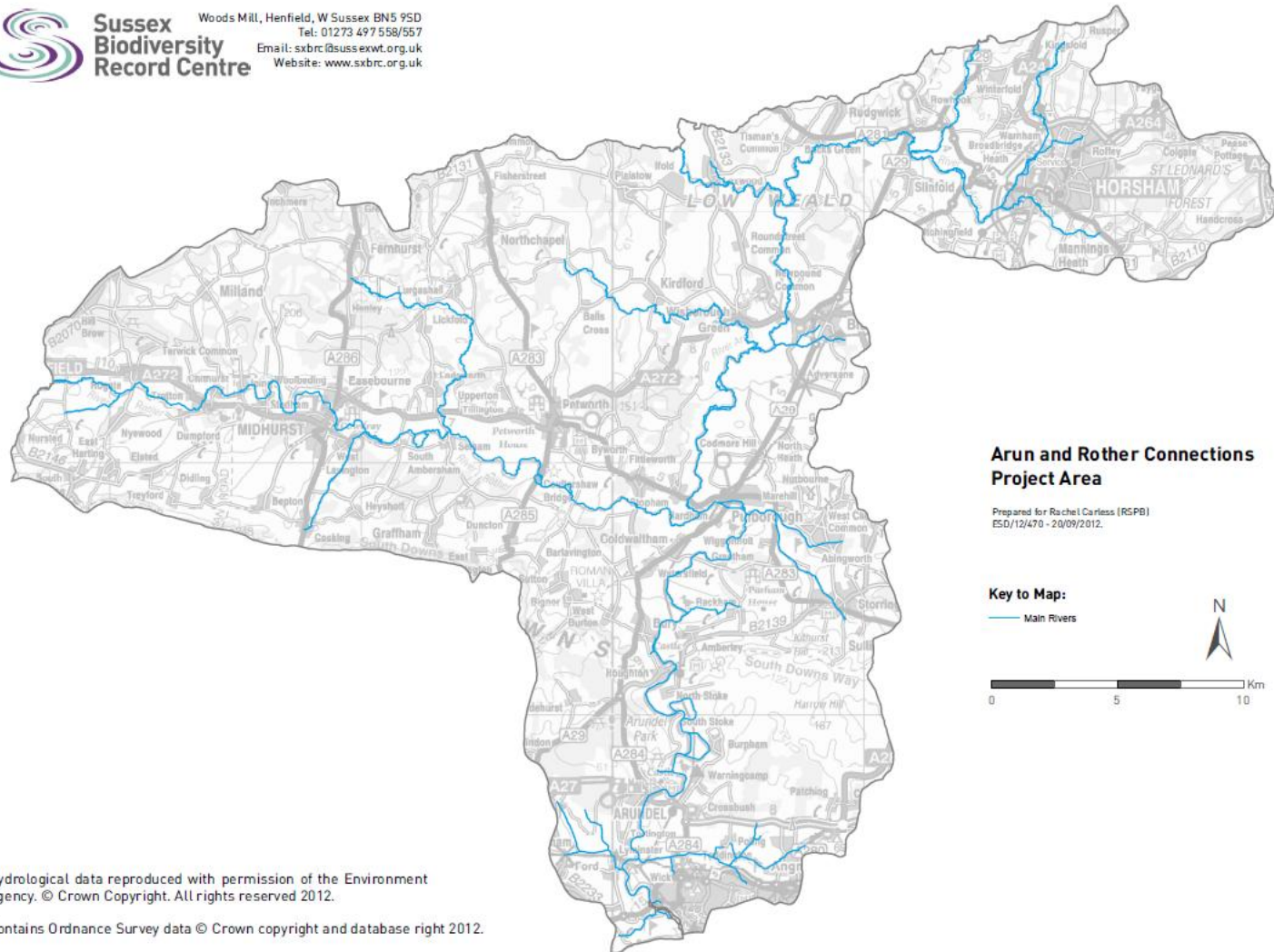




# ARC Project



**Sussex Biodiversity Record Centre**  
Woods Mill, Henfield, W Sussex BN5 9SD  
Tel: 01273 497 558/557  
Email: [sxbr@sussexwt.org.uk](mailto:sxbr@sussexwt.org.uk)  
Website: [www.sxbr.org.uk](http://www.sxbr.org.uk)



## Arun and Rother Connections Project Area

Prepared for Rachel Carless (RSPB)  
ES0/12/470 - 20/09/2012.

### Key to Map:

— Main Rivers



Hydrological data reproduced with permission of the Environment Agency. © Crown Copyright. All rights reserved 2012.

Contains Ordnance Survey data © Crown copyright and database right 2012.

# ARC's Vision

**To engage the community in understanding and tackling catchment issues in the Arun & Western Rother river valleys and to jointly deliver more sustainable long-term catchment management.**



Image © L Hull





a million  
voices for  
nature

**3 year Funding until August 2016, Over 70 projects**

**Sarah McIntyre – Invasive Species Officer**

**Rachel Carless – ARC project Manager**

**Debbie Coggles – Community and Education Officer**

**Veronika Moore - Arun & Rother Rivers Trust Officer**



**Helping people tackle issues at a landscape scale**

# Rain garden funding



# Funding to Restore Floodplain Woodland, Meadow, & Wet heath



# Training opportunities

**Pond Survey Training**

**Invasive Species Training**

**Dragonfly survey training**

**Toad training**

**Rain Garden workshops**

**Mink Control workshop**

**3 x Best practice land management site visits**

**3 x Land management workshops (tell us what you need)**

**Workshop on how to access funding (Eco conf)**



# Community & Habitat grants

**For communities to implement a range of habitat / wildlife / access improvements in the ARC project area.**

Average grant value £500 - £1000.

The sorts of things we will fund include:

Site management plans or surveys for local wildlife sites

Barn owl boxes

Equipment to carry out conservation works

Training

Access improvements

Interpretation (leaflets / boards etc)

School grounds enhancements

Work to enhance and re-connect species / habitats

Hedge & shaw planting

Pond & scrape creation

Fencing

**To discuss a project idea please contact Fran Southgate on 01273 497555 or email [fransouthgate@sussexwt.org.uk](mailto:fransouthgate@sussexwt.org.uk).**

**ARC invasive species Officer**

**[Sarah.mcintyre@rspb.org.uk](mailto:Sarah.mcintyre@rspb.org.uk) ; 07808 201666**

**Rachel Carless, ARC Project Manager**

**[Rachel.Carless@rspb.org.uk](mailto:Rachel.Carless@rspb.org.uk) ; 01273 763374**

**ARC volunteer training (toads, water voles, dragonflies, invasive species)**

**[Debbie.coggles@rspb.org.uk](mailto:Debbie.coggles@rspb.org.uk)**

**Fran Southgate, ARC Tech Support**

**[fransouthgate@sussexwt.org.uk](mailto:fransouthgate@sussexwt.org.uk) ; 01273 497555**

**WildCall 01273 494777**

**[www.sussexwildlifetrust.org.uk/wildlife/index.htm](http://www.sussexwildlifetrust.org.uk/wildlife/index.htm)**

**Sussex Biodiversity Records Centre / Local Recording Groups**

**[sxbrc.org.uk](http://sxbrc.org.uk)**

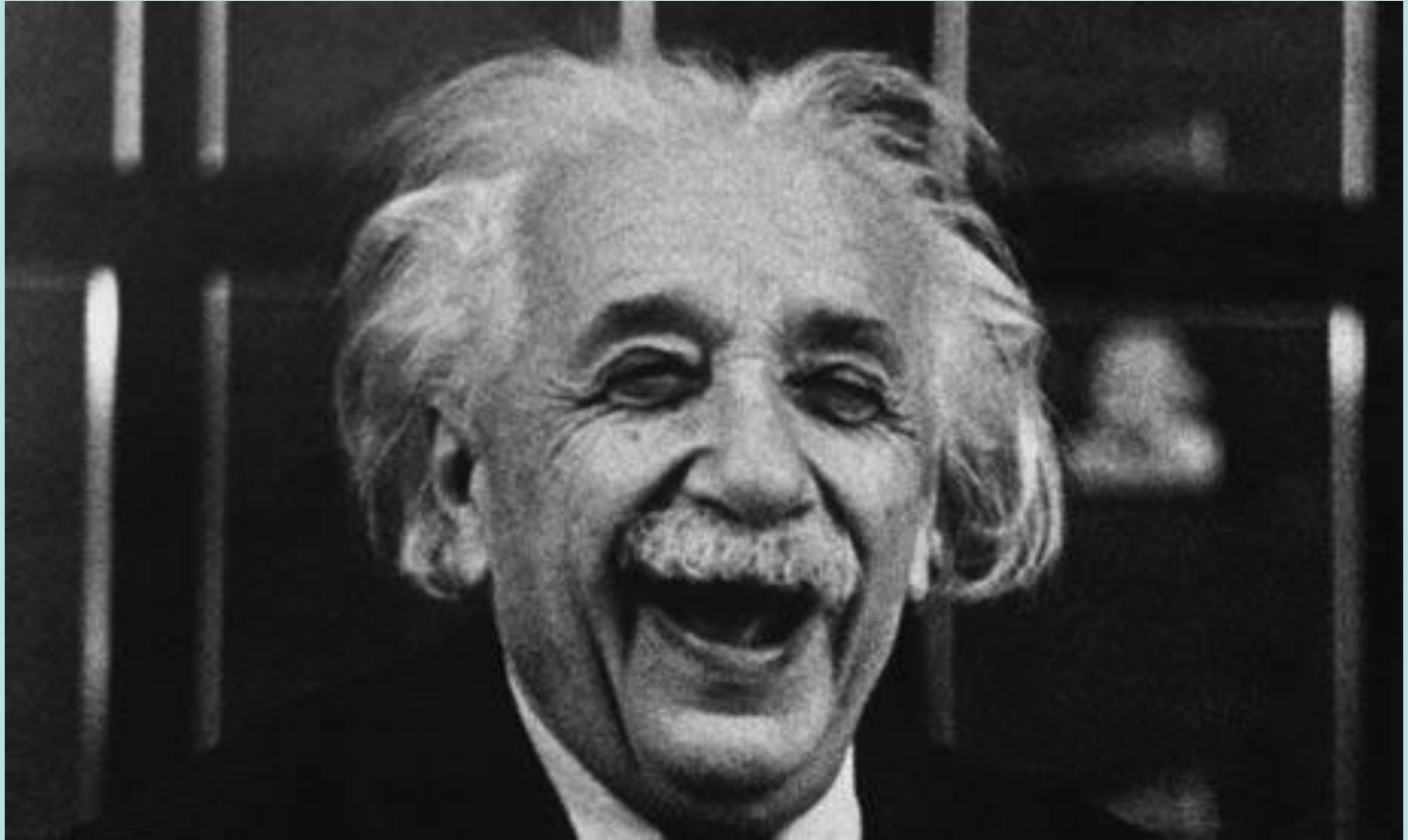
**Arun & Western Streams Catchment Partnership ;**

**[arunwesternstreams.org.uk](http://arunwesternstreams.org.uk)**





# Creating Living Landscapes



**“Imagination is more important than knowledge.  
Knowledge is limited, imagination encircles the world”**



