



**Coastal Communities 2150**

**John Gower**  
**CC2150 Project Manager**

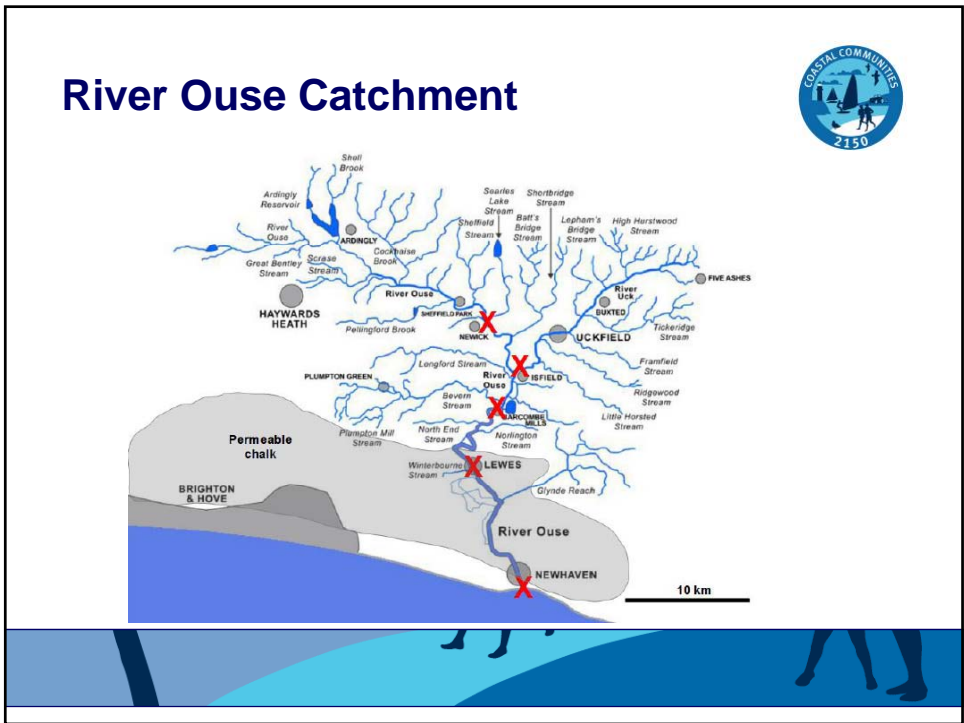
[WWW.CC2150.eu](http://WWW.CC2150.eu)



## Coastal Communities 2150

- INTERREG 2 Sea Communication project engaging with communities at long-term risk from coastal climate change
- Partners work with pilot community to raise awareness and produce a 'vision' and action plan

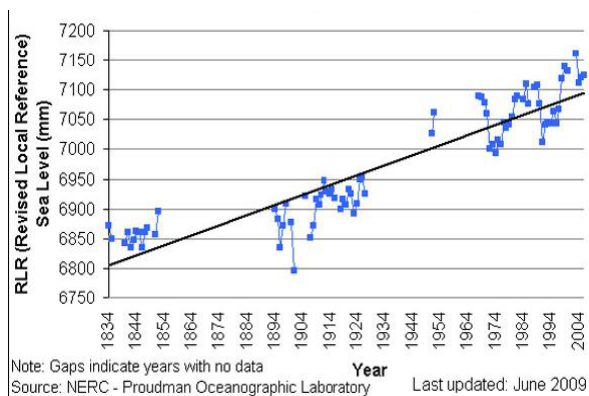






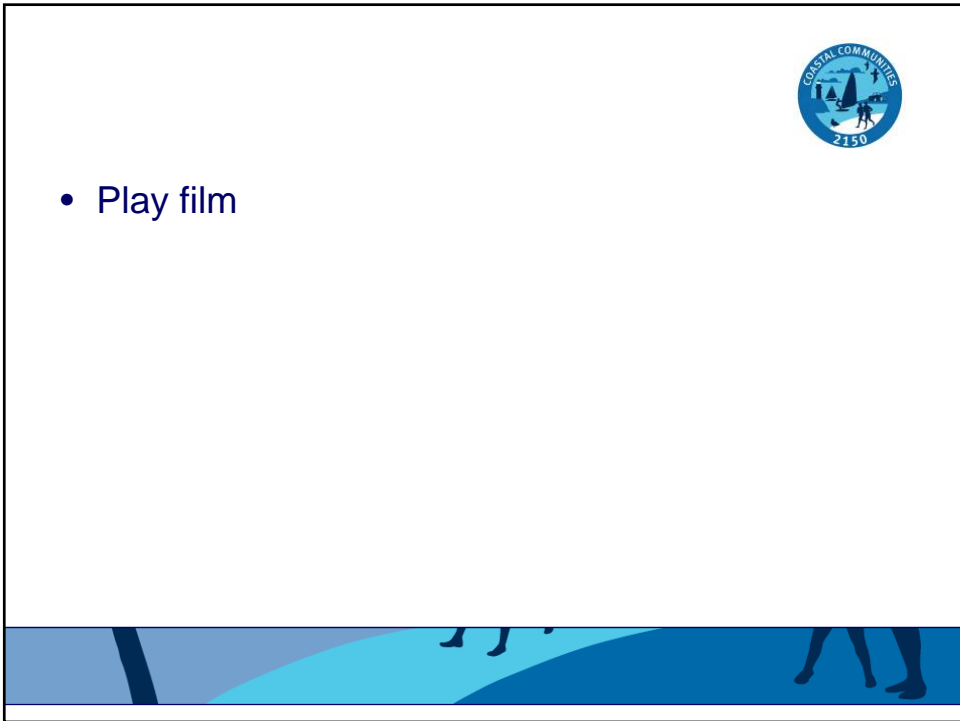
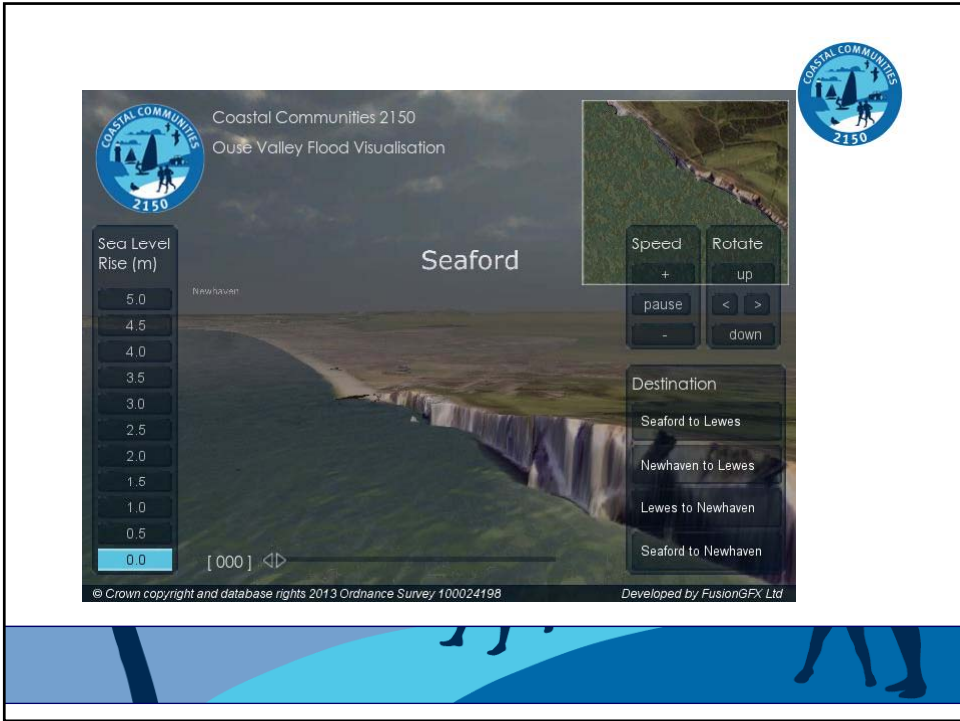


## Sea level rise at Sheerness (Kent) since 1834



## The Facts behind the Fiction





# Coastal Futures Group



## Coastal Communities 2150

### Ecosystems Services, Climate Change and Community Adaptation Workshop

(in collaboration with Lewes & Ouse Valley eco-nomics)



**Lewes & Ouse Valley eco-nomics**  
Valuing Local Natural Capital



### Waking up to tomorrow

Adapting to climate change in the lower Ouse valley and coastal areas

The Coastal Futures Group vision and action plan




## Community Engagement

- It takes a long time to engage with people
- Climate change has moved up political agenda
- People are ready for information /less 'Deniers' than expected
- When communicating - Be bold, Be Brave, be Honest







**Coastal Communities 2150**

**John Gower**  
**CC2150 Project Manager**

[WWW.CC2150.eu](http://WWW.CC2150.eu)




## Btn University Ecosystems Conf Key Messages:-



- We used INTERREG funding to run a very successful CC2150 partnership project
- We formed a very strong local partnership with the community through the Coastal Futures Group and holding engagement events
- Our flythrough tool was very successful, and helps people to appreciate the need to consider the catchment as a whole, i.e sea level rise impacts all the way up to Lewes
- Local communities, especially Parish Councils have been very supportive and are 'up for' pushing the boundaries on climate change
- We encountered fewer deniers than expected and no one has challenged us on the science
- Education and schools has been particularly successful
- It takes time to engage – you have to provide information in discreet 'bite sized chunks' but its worth the effort.
- We piloted an 'Ecosystems Services workshop' to explore the impacts of long term climate change – This will be the link between us.
- The challenges of climate change are immense, but don't shy away or patronise people. Involve them in the solutions to problems.
  - 
  - Be Bold , be Brave, be honest.

