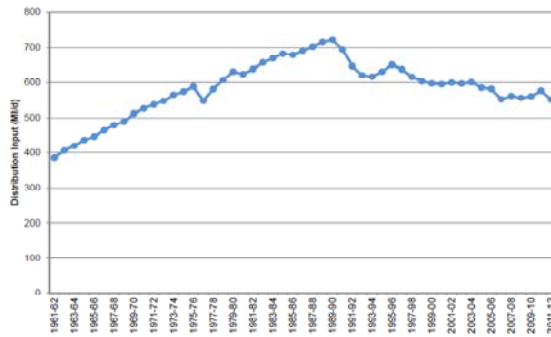


## Opportunities ahead: a water company perspective

Jonny Burke



## Catchment solutions and partnerships – key for the future



- Sustainable, resilient and affordable water supply systems



## What do our customers think?

### Question 10

Do you support schemes to work in partnership with landowners, farmers and river trusts to improve the quality and flow of water in rivers and help keep them available for water supplies for longer?

Number of responses = 917	Written responses	CFG	Business	Domestic	OVERALL
1. Yes	95%	94%	90%	97%	95.64%
2. No	3%	1%	2%	1%	1.20%
3. Don't know	3%	4%	8%	2%	3.16%



## Catchment solutions

- Traditionally they have been focussed on delivering water quality benefits
  - Nitrate
  - Turbidity
  - Pesticides
- Examples of working together
  - Western Rother
  - Brighton Chalk Block Partnership



# Western Rother

**Tomorrow's target**  
The Catchment Plan sets a target for the Rother to reach good status by 2015, and the most realistic date of progression towards this is 2020. In order to meet this target, the catchment partners of the River and Catchment Plan are working together to develop a Catchment Management Plan (CMP) which will set out the actions and programmes to be implemented to improve the Rother.

**1 Water quality and sand**  
The beds up or sand, which has been washed from the river banks, is a major problem for the Rother. It is causing a large increase in the turbidity of the water in the Rother and the city of Brighton, affecting swimming and fishing.

**2 Recreation**  
There are many people who like to use the Rother for angling, fishing, walking, dog and other activities. It is important to ensure that the Rother is a safe and enjoyable place for all.

**3 River structures**  
Over the years a number of structures have been built to improve the flow of water and reduce the risk of flooding. However, these structures can also cause problems for the river and the wildlife that lives in it.

**4 Research**  
Research is being carried out to help us understand the Rother better. This will help us to make decisions about the best way to manage the river.

**5 Biodiversity**  
The Rother is a very important habitat for many different species of plants and animals. It is important to protect and improve these habitats.

**6 Communication and education**  
It is important to let everyone know about the Rother and the Catchment Plan. This will help us to work together to improve the Rother.

*The Rother is a designated Site of Nature Conservation. Importance for its wildlife.*

**Southern Water**

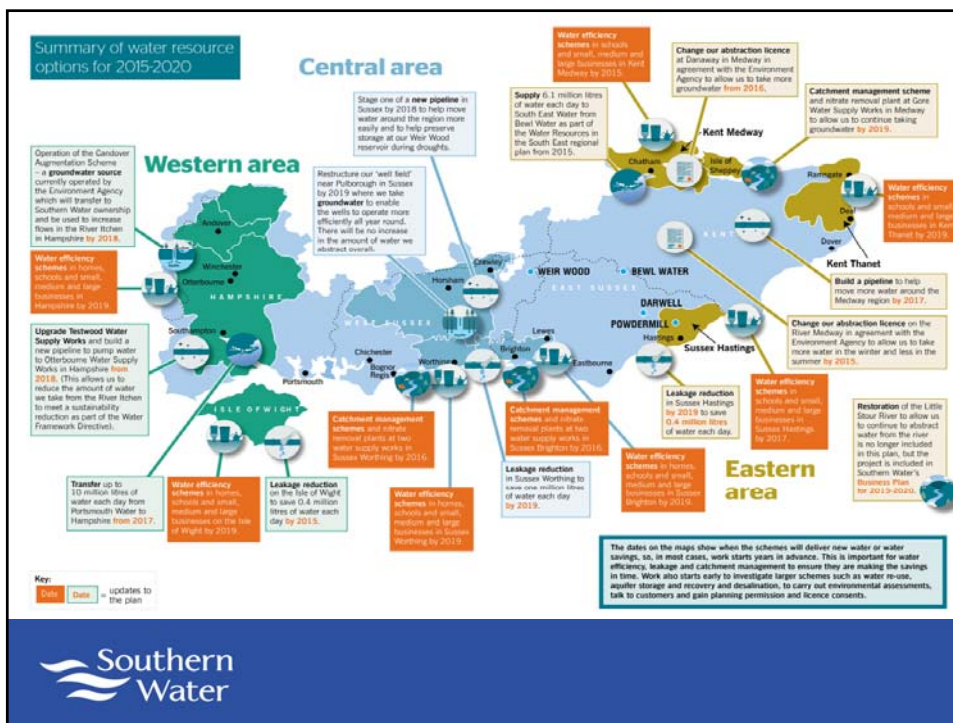
## Brighton Chalk Integrated Catchment Management Partnership (Brighton CHAMP)

- The South Downs National Park Authority, Southern Water, Environment Agency, Brighton & Hove and Lewes Downs Biosphere Project, Natural England, Brighton and Hove City Council and Brighton University
- Integrated catchment management for the Brighton Chalk block.
- Working together to help reduce future investment and meet good status under the Water Framework Directive.

**Southern Water**

## How have we tackled the funding issue?

- New approach
- Tested the solutions in our draft Water Resources Management Plan
- Plan seeks to find the most cost effective solution for the challenges ahead
- Resulted in several nitrate, pesticide and turbidity schemes being incorporated into our business plan



## New horizons

- Catchment schemes and working partnerships are the future
- Ecosystem services can be incorporated into these investment frameworks in the future
- Work now needs to demonstrate the benefits (MI/d) of these services and schemes
- 15 years ago water efficiency schemes started the same journey, so many of the barriers have been broken down



## The vision

- Ecosystem services fully integrated into water company plans
- The solutions delivering a wide range of benefits to the catchment and activities within the catchments
- Resulting in affordable bills, sustainable abstraction regimes and resilient, diverse catchments

